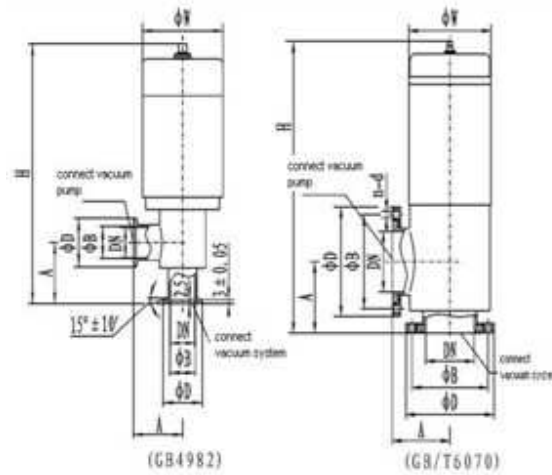


## Electro-magnetic air admittance gas valve- flange mounting.



This electro-magnetic vacuum gas valve is a special valve installed in rotary vane vacuum pump. The valve and pump should be connected in the same power. The pump start / stop directly controls the valve open / close. When the pump stops working or there is a sudden interruption of the power supply, the valve will automatically close the vacuum system and fills gas into pump through the pump gas inlet. In this way, it prevents the pump oil return to the vacuum system.

The applicable active medium of this valve are air, non-corrosive gas.

### Technical specification:

Scope (m.Bar)	$10^3 \sim 1 \times 10^{-4}$
Valve Leakage Rate(m.Bar.L/S)	$< 6.7 \times 10^{-6}$
Applicable temperature (°C)	-25 ~ +50
Winding temperature (°C)	≤65
Time for opening and closing the valve (S)	≤3
Rated voltage (V/Hz)	220±10%/50
Flange Standard	KF and ISO-F

### Connection and Dimensions :

Model	Nominal Diameter(DN)	ΦW	ΦD	ΦB	H	A	n-d	Flange standard
AAV-FM16B	16	68	30	17.2	191	40		GB4982
AAV-FM 25B	25	82	40	26.2	202	50	/	
AAV-FM 32B	32	92	55	41.2	244	50		
AAV-FM 40B	40	110	55	41.2	275	65		GB/T6070
AAV-FM 50B	50	125	110	90	314	80	4-Φ9	
AAV-FM 65B	65	135	130	110	343	88	4-Φ9	
AAV-FM 80B	80	135	145	125	387	95	4-Φ9	
AAV-FM 100B	100	165	165	145	399	108	8-Φ9	

ph: +91-080-23327059 Mob: +91-9886726920,  
e mail: [support@uniquevacuum.co.in](mailto:support@uniquevacuum.co.in)