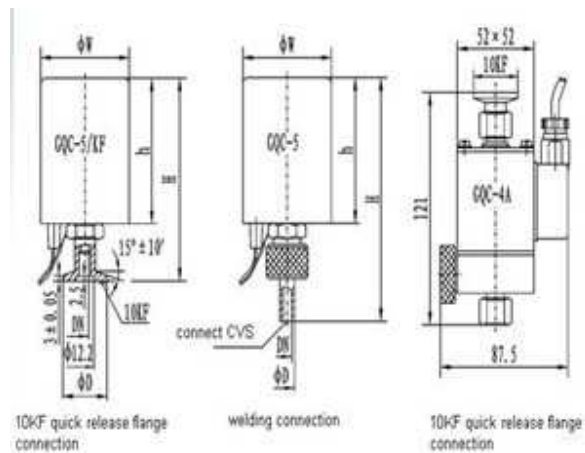


Air admittance – vent valve- electromagnetic



This series electro-magnetic high-vacuum gas valve takes electro-magnetic force as the dynamics. When put through the power, the valve closes to separate vacuum system from atmosphere. When cut off the power, the valve opening and fills the gas into vacuum system.

AAD-VV -4A series electro-magnetic high-vacuum gas valve has two functions of electrified open / close. There is an air filter in the valve. It can be used for vacuum system gas filling.

The applicable active medium of this valve are air, non-corrosive gas

Main technical performance:

Technical parameter	GQC-1.5	GQC-5	GQC-5/KF	GQC-4A
Scope(m. Bar)	$10^3 \sim 1.3 \times 10^{-6}$			
Valve Leakage Rate (Pa.L/S)	$\leq 1.3 \times 10^{-6}$			
Flange standard	Welding connection:GB4982			GB4982
Standard manufacture	Valve is under working condition when the power is cut off			

Outline and connection size

Model	Nominal diameter(DN)	ΦW	ΦD	H	h	Electrical parameter		
						Voltage	Power	
AAD-VV-1.5	1.5	52	7	112	66	DC36V	3.3W	
AAD-VV -5	5	60	10	136	90	DC36V	6.5W	
AAD-VV -5/KF	5	60	30	119	90	DC36V	6.5W	
AAD-VV -4A	4	The size shows in pic.					DC36V	3.6W
						AC220V		