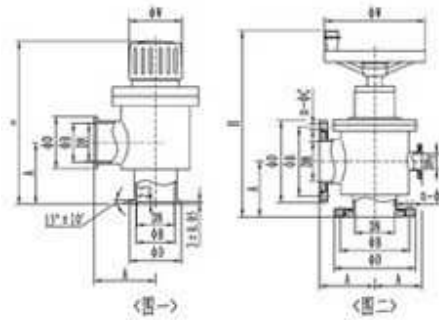


Manual operation high vacuum isolation valve



This high vacuum damper valve(Angle Valve)is used to open or close the air current in the vacuum system. The screw drive is adopted as the transmitted components to lift the valve, which are lighter and reliable in movement. GD-J is angle type and J(S) SERIES is three-way type with pre pumping. Applicable medium can be air and noncorrosive gases.

Basic Dimensions

Applicable Scope(m.Bar)	$2 \times 10^{-3} \sim 1.3 \times 10^{-6}$
Valve Leak Rate(m.Bar.L/S)	$\leq 1.3 \times 10^{-8}$
Medium Temperature (°C)	-25~+80(Seal Material: chemi gum)
Install Position	-30~+150(Seal Material: viton)
	arbitrary

(Picture One)(KF) Overall Dimension

Model	Diameter(DN)	ΦD	ΦB	H	A	ΦW	Flange Standard
MRV-J10/KF	10	30	12.2	122	30	36	GB4982
MRV-J16/KF	16	30	17.2	132	40	36	
MRV-J25/KF	25	40	26.2	158	50	50	
MRV -J40/KF	40	55	41.2	180	65	56	/
MRV -J50/KF	50	75	52.2	278	70	100	

(Picture Two)Lap Joint Flange Connections and Size

Model	Diameter(DN)	ΦD	ΦB	H	A	ΦW	n-ΦC	DNy	Flange Standard	
MRV -J50	50	110	90	278	70	100	4-Φ9	/	GB/T6070	
MRV -J63	63	130	110	390	88	160	8-Φ9			
MRV -J80	80	145	125	432	88					
MRV -J100	100	165	145	460	108	200	8-Φ11	DN40(GB4982)	JB919 GB/T6070	
MRV -J(S)150	150	220	195	636	138					
MRV -J(S)160	160	225	200	636	138			250	12-Φ11	DN50(GB/T6070) DN63(GB/T6070)
MRV -J(S)200	200	285	260	788	200					
MRV -J(S)250	250	335	310	820	208					
MRV -J(S)300	300	380	350	980	250	8-Φ14	DN80(GB/T6070)	JB919		

ph: +91-080-23327059 Mob: +91-9886726920,
e mail: support@uniquevacuum.co.in