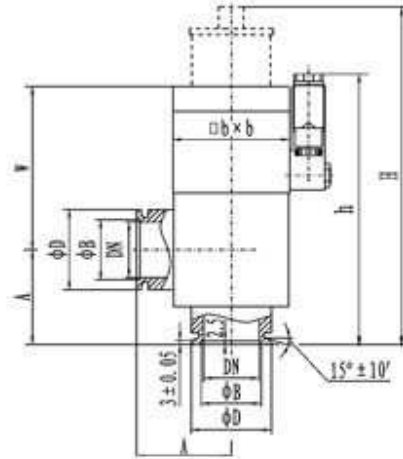


Electro pneumatic high vacuum isolation valve (Angle Valve)



This electronic and pneumatic high vacuum damper valve (Angle Valve) is sealed by sylphon and signaled by electrical signal as the valve switch and depended on the compressed air as the motive force to open or close the valve. The valve will be relied on the spring to close the valve automatically when losing power supply or the compressed air. To be the on and off mechanism in the high vacuum tube, such valve is advantageous in operating steady and reliable with long life span, which can be the top choice within the automatic vacuum facilities. Applicable medium can be air and noncorrosive gases.

Basic Dimensions

Applicable Scope(m.Bar)	$1 \times 10^{-3} \sim 1.3 \times 10^{-8}$
Valve Leak Rate(m.Bar.L/S)	$\leq 1.3 \times 10^{-9}$
Applicable Temperature (°C)	-25 ~ +40
Air Source Pressure (MPa)	0.4 ~ 0.6
Flange Standard	GB4982
Install Position	Arbitrary
Power Voltage	Standard Technism : AC220V/50Hz especially for AC110V ; DC24V ; DC12V.
Signal Feedback	Standard Technism : without signal feedback especially for microswitch

Overall Dimensions

Model	Diameter(DN)	ΦD	ΦB	W	H	h	A	bx b
ERV-J10(b)/KF	10	30	12.2	76	170	146	40	36x36
ERV-J16(b)/KF	16	30	17.2	76	170	146	40	36x36
ERV-J25(b)/KF	25	40	26.2	95	200	165	50	61x61
ERV-J40(b)/KF	40	55	41.2	112	232	186	65	80x80

ph: +91-080-23327059 Mob: +91-9886726920,
e mail: support@uniquevacuum.co.in