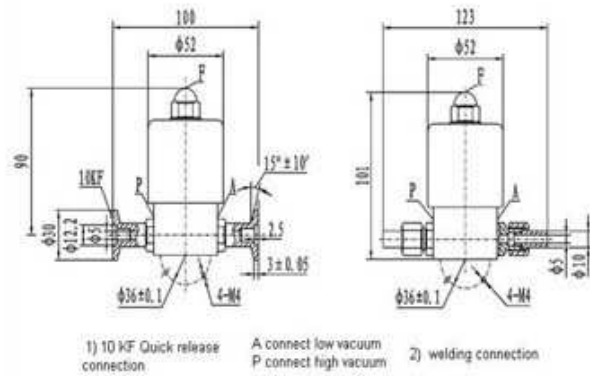


Small electro-magnetic high-vacuum gas valve



This electro-magnetic high-vacuum gas valve connects with high & low vacuum system. When the valve is electrified, it connects together P & A end pipeline. When the valve is outaged, the valve plate closes and turns off the P & A end pipeline in order to protect the vacuum degree. At the same time, it fills gas to the A end through the F end. The applicable active medium of the valve are clean air, non-corrosive gas.

Main technical performance:

Model	GDC-Q5	GDC-5
Nominal diameter (DN)		5
Scope (m.Bar)		$10^3 \sim 6.7 \times 10^{-6}$
Valve Leakage Rate (m.Bar.L/S)		$\leq 1.3 \times 10^{-6}$
Voltage (V/Hz)		220/50
Winding temperature (°C)		≤ 65
Installation		Random
Connection standard	1) GB4982 ; 2) Welding connection	