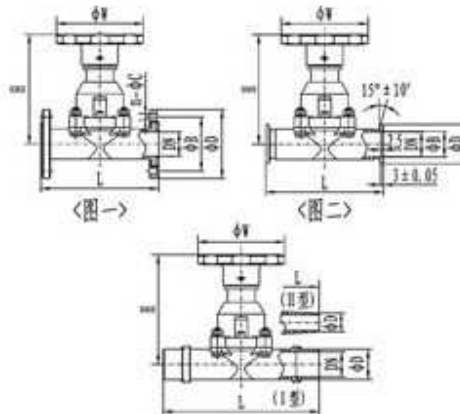


# HIGH VACUUM DIAPHRAGM VALVES



This High vacuum diaphragm valve use valve rod to press rubber film directly on the valve seat, use to cut-off or connect vacuum system. Connection form as: lap joint flange connection, fast unload flange connection, weld type connection. Weld type connection is divided into weld I type connection (both end weld),weld II type connection(one end weld, another end insert). Applicable medium can be air and noncorrosive gases.

## Main Technical Performance

applicable scope(m.Bar)	$10^3 \sim 1.3 \times 10^{-6}$
valve leak rate(Pa.L/S)	$\leq 1.3 \times 10^{-6}$
medium temperature (°C)	-25~+80(sealing material is chemigum)
	-30~+150(sealing material Viton)
installation site	Will fully

## P1 lap joint flange connection and overall Dimensions(mm)

model	diameter(DN)	ΦD	ΦB	ΦW	H	L	n-ΦC	Flange standard
DM-10	10	46	36	55	75	75	4-Φ6	JB919
DM-25	25	70	55	90	115	120	4-Φ7	
DM-40	40	100	80	100	132	150	4-Φ9	GB/T6070
GM-50	50	110	90	100	157	180	4-Φ9	

## fast unload flange connection and overall Dimensions

model	diameter(DN)	ΦD	ΦB	ΦW	H	L	Flange standard
DM-10/KF	10	30	12.2	55	75	75	GB4892
DM-25/KF	25	40	26.2	90	115	100	
DM-40/KF	40	55	41.2	100	132	150	
DM-50/KF	50	75	52.2	100	157	180	/

## weld type connection and overall Dimensions

model	diameter(DN)	ΦD	ΦW	H	L
DM-10-H( I )	10	19	55	75	150
DM-25H( I )	25	32	90	115	200
DM-40H( I )	40	45	100	132	240
DM-50H( I )	50	57	100	157	240
DM-10H( II )	10	9	55	75	150
DM-25H( II )	25	19	90	115	200

ph: +91-080-23327059 Mob: +91-9886726920,  
e mail: [support@uniquevacuum.co.in](mailto:support@uniquevacuum.co.in)